



# BLOCH WIND FARM

## FIGURE 6.3 HERITAGE VIEWPOINTS

© CROWN COPYRIGHT, ALL RIGHTS RESERVED.  
2022 LICENCE NUMBER 0100031673.

- Site Boundary
- Proposed Turbine
- Proposed Turbines 5 km & 15 km Buffer
- Heritage Viewpoint
- Scheduled Monument (Centre Point)
- Scheduled Monument Area
- World Heritage Site
- Listed Building (Category)**
  - A
  - B
- Inventoried Garden and Designed Landscape
- Conservation Area
- Inventoried Battlefield
- Zone of Theoretical Visibility**
- No. of Turbine Blade Tips Visible**
  - High : 21 Turbines Visible
  - Low : 0 Turbines Visible



LAYOUT DWG: 04097-RES-LAY-DR-PE-001 T-LAYOUT NO: PSC0sbe024

DRAWING NUMBER  
**03539.00016.0011.1**

SCALE - 1:150,000 @ A3

**ENVIRONMENTAL IMPACT  
ASSESSMENT REPORT 2022**

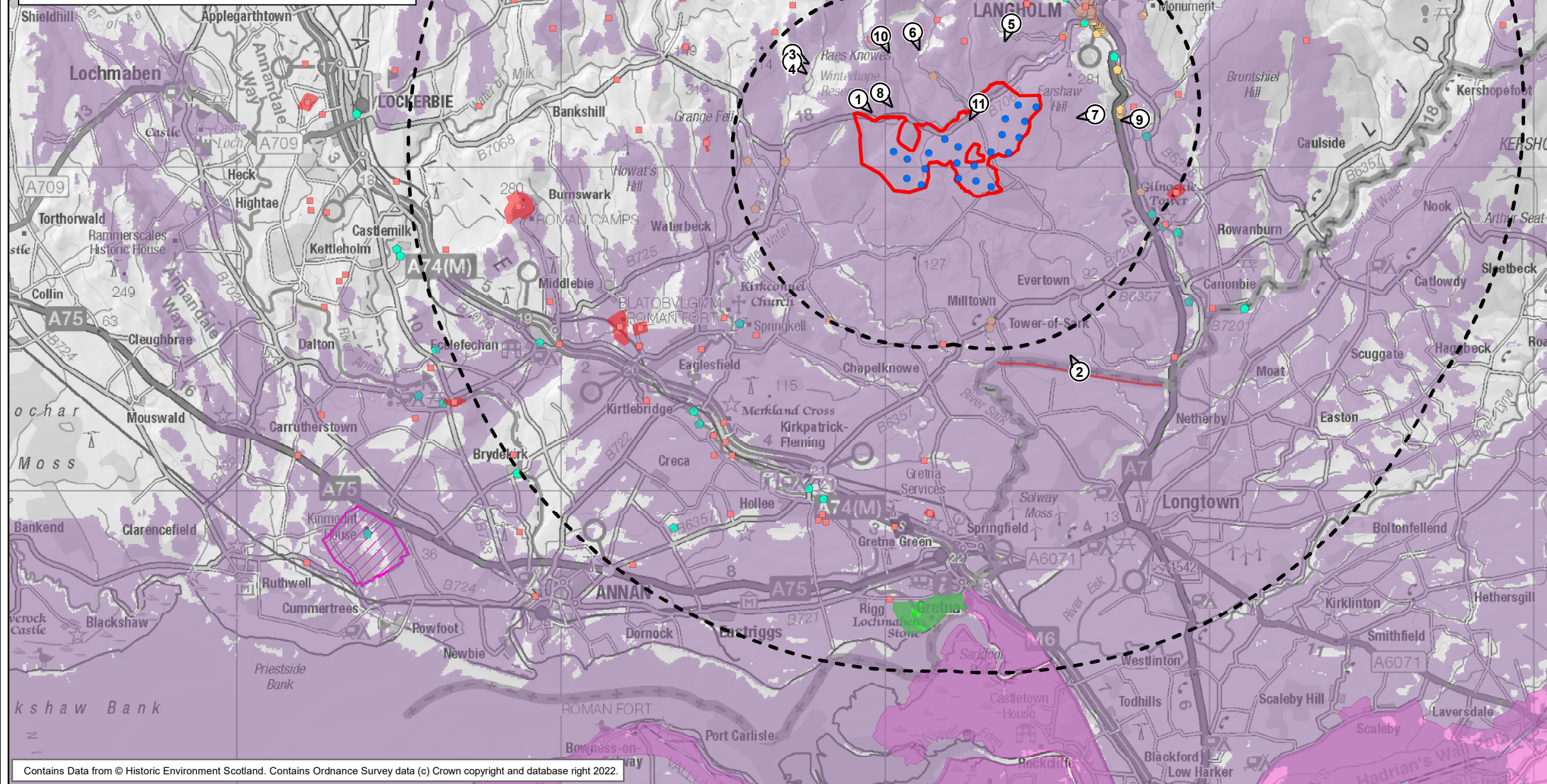
THIS DRAWING IS THE PROPERTY OF RENEWABLE ENERGY SYSTEMS LTD. AND NO REPRODUCTION MAY BE MADE IN WHOLE OR IN PART WITHOUT PERMISSION

### Note

This Zone of Theoretical Visibility (ZTV) has been generated using ESRI ArcGIS Spatial Analyst extension. The digital terrain model (DTM) has been derived from OS Terrain 5 dataset (+/-2m) up to 15km from the turbine locations, and OS Terrain 50 dataset (+/-10m). Earth curvature has been included in the ZTV calculation and refraction of light has been applied using SNH guidance settings. The ZTV has been generated from a viewing height of 2m above ground level which falls within recommendations by "Visual Representation of Windfarms" prepared for Scottish Natural Heritage (SNH) February 2017 - Version 2.2.

The use of ZTV mapping at this stage is limited and the following assumptions should be noted:

- The ZTV has been generated using the proposed turbine locations for Bloch Wind Farm.
- The proposed turbine blade tips heights of 180m, 200m & 230m have been used for generating the ZTV.
- The ZTV is generated from a bare earth terrain and does not account for the screening effect of features within the landscape such as settlements and woodland. It does not indicate potential visual effects or show the likely significance of effects. It shows potential theoretical visibility only. The ZTV has been produced for the purpose of informing 'on the ground' visual assessment.
- The ZTV colour palette has been specifically developed to assist viewers with reduced sensitivity to red, green and blue light.
- The ZTV has been generated up to 30km from the proposed Bloch Wind Farm turbines.



Contains Data from © Historic Environment Scotland. Contains Ordnance Survey data (c) Crown copyright and database right 2022.