



# Bloch Wind Farm Dumfries & Galloway

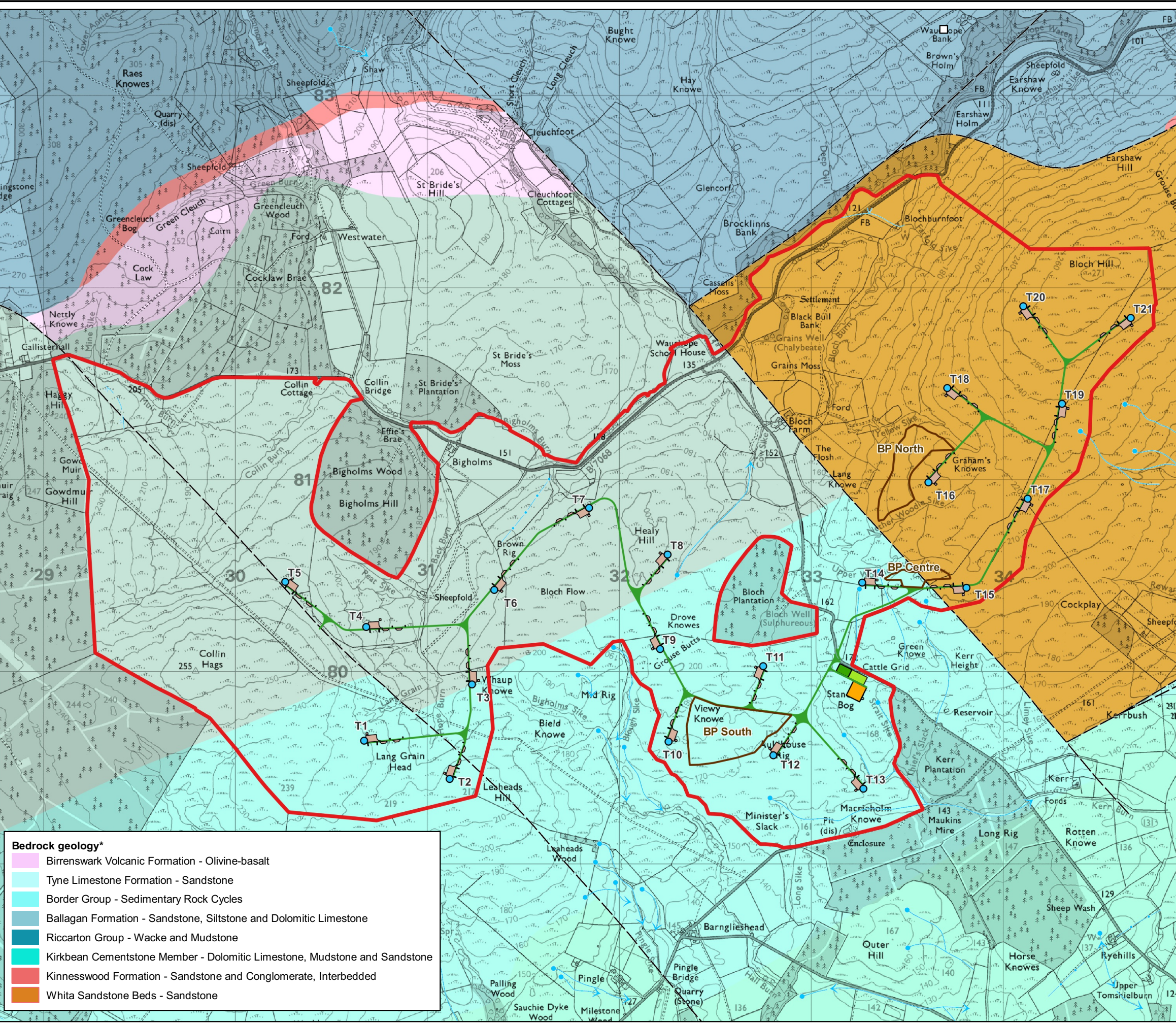
## Figure 9.9

### Bedrock Geology

© CROWN COPYRIGHT, ALL RIGHTS RESERVED.  
2022 LICENCE NUMBER 0100031673.

- Key**
- Site boundary
  - Proposed turbine
  - Proposed track
  - Proposed new and upgraded passing bays
  - Proposed cranepad
  - Proposed temporary construction compound
  - Proposed borrow pit
  - Proposed substation
  - Proposed battery storage compound
  - Fault line
  - Glacial meltwater channel

\*Geological data reproduced with the permission of the British Geological Survey © NERC, 2022. All rights reserved.



**Bedrock geology\***

	Birrenswark Volcanic Formation - Olivine-basalt
	Tyne Limestone Formation - Sandstone
	Border Group - Sedimentary Rock Cycles
	Ballagan Formation - Sandstone, Siltstone and Dolomitic Limestone
	Riccarton Group - Wacke and Mudstone
	Kirkbean Cementstone Member - Dolomitic Limestone, Mudstone and Sandstone
	Kinnesswood Formation - Sandstone and Conglomerate, Interbedded
	Whita Sandstone Beds - Sandstone

LAYOUT DWG <b>04097-RES-LAY-DR-PE-001</b>	T-LAYOUT NO. <b>010922_21t_A</b>
--	-------------------------------------

DRAWING NUMBER <b>GB201289_M_011_A</b>
---

**SCALE - 1:20,000 @ A3**

### ENVIRONMENTAL IMPACT ASSESSMENT REPORT 2022

THIS DRAWING IS THE PROPERTY OF RENEWABLE ENERGY SYSTEMS LTD. AND NO REPRODUCTION MAY BE MADE IN WHOLE OR IN PART WITHOUT PERMISSION