



Bloch Wind Farm

Technical Appendix 11.7: Charts

Author	Andrew Birchby
Date	October 2022
Ref	Final

This document (the “Report”) has been prepared by Renewable Energy Systems Ltd (“RES”). RES shall not be deemed to make any representation regarding the accuracy, completeness, methodology, reliability or current status of any material contained in this Report, nor does RES assume any liability with respect to any matter or information referred to or contained in the Report, except to the extent specified in (and subject to the terms and conditions of) any contract to which RES is party that relates to the Report (a “Contract”). Any person relying on the Report (a “Recipient”) does so at their own risk, and neither the Recipient nor any person to whom the Recipient provides the Report or any matter or information derived from it shall have any right or claim against RES or any of its affiliated companies in respect thereof, but without prejudice to the terms of any Contract to which the Recipient is party.



Contents

Technical Appendix 11.7: Charts 1

1.1 Charts

Chart A11.1: Wind Speed and Direction during the Background Noise Survey

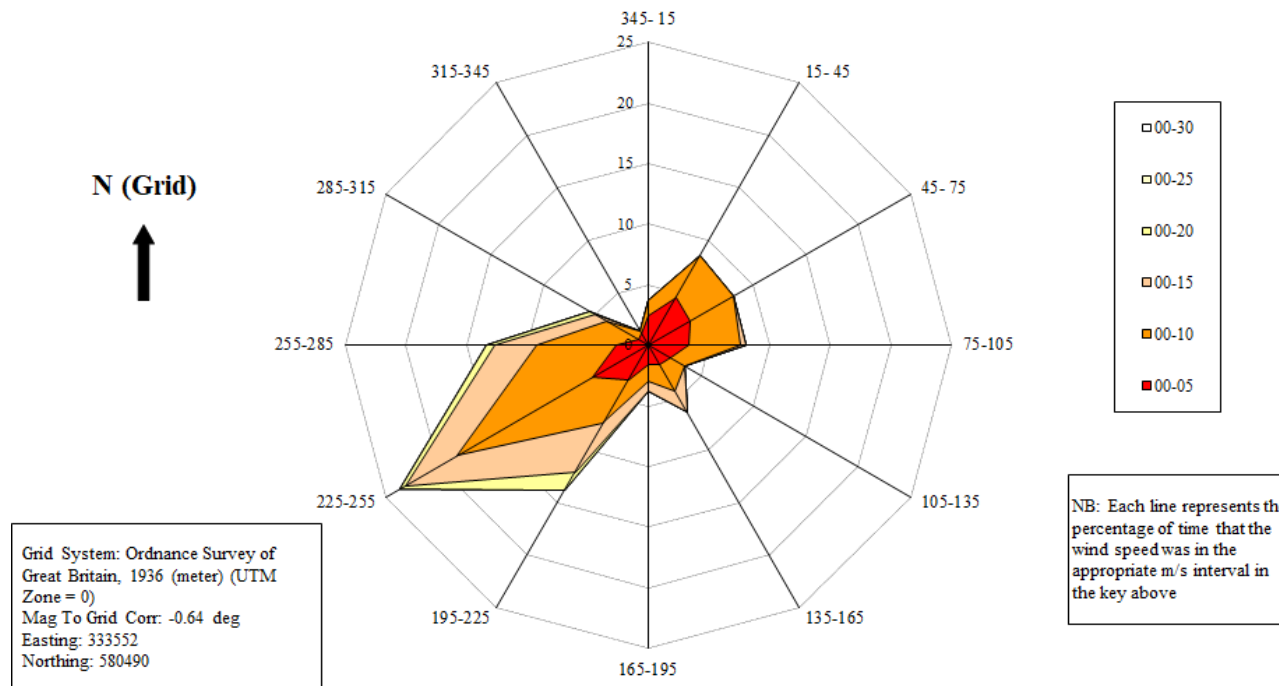


Chart A11.2: Measured Wind Rose over an Extended Period

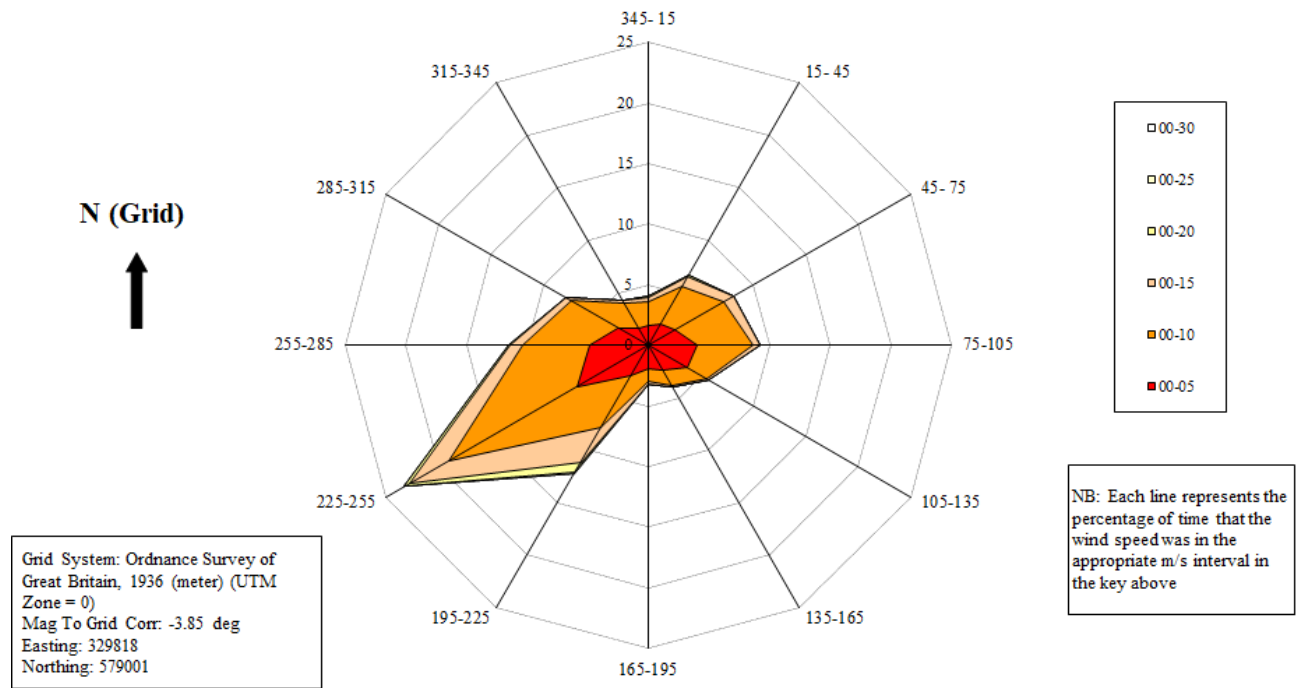


Chart A11.3: Downwind Predicted Noise Levels, Daytime Noise Limits and Background Noise Levels during Quiet Daytime Periods at Bloch Farm

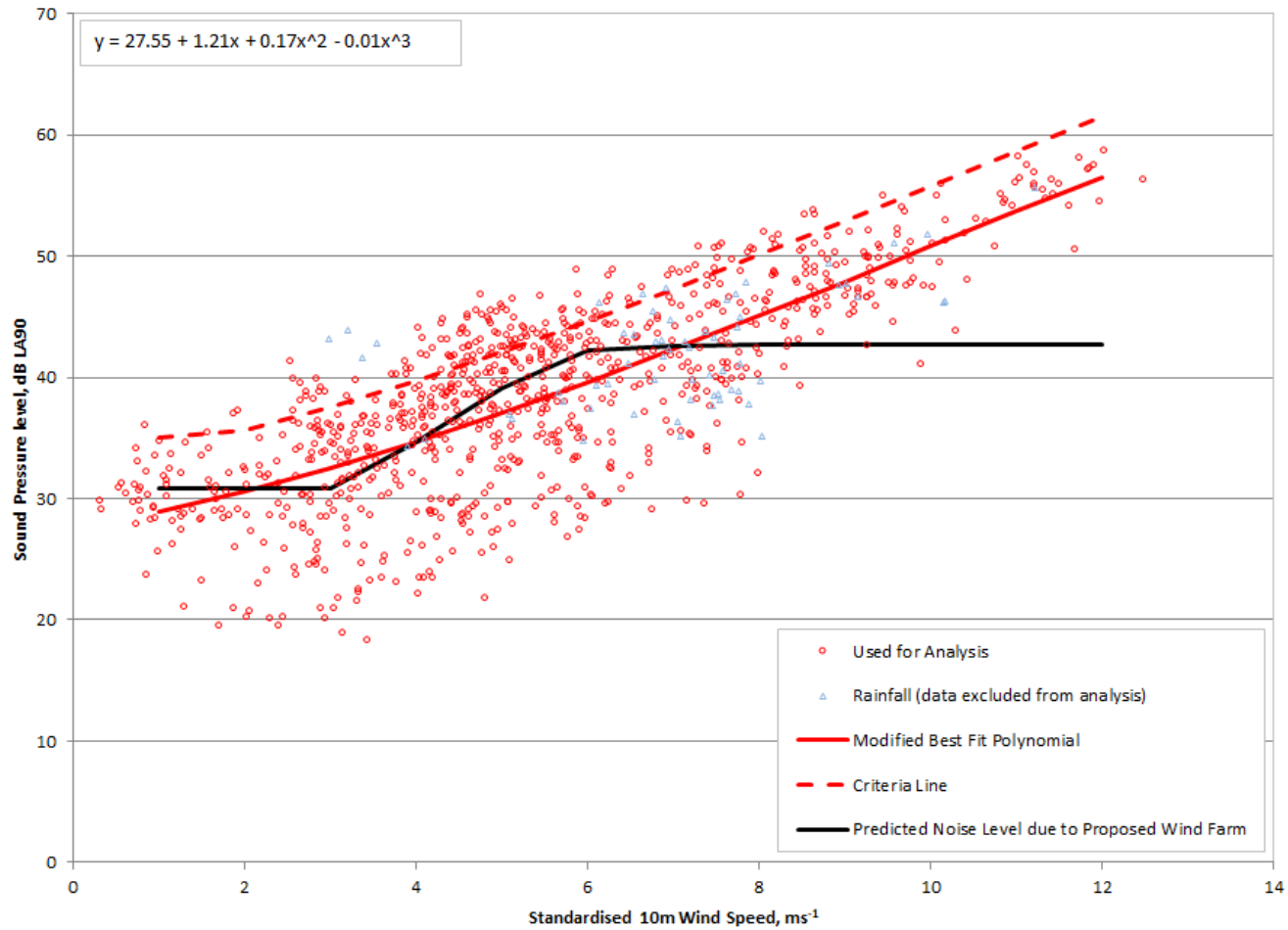


Chart A11.4: Downwind Predicted Noise Levels, Daytime Noise Limits and Background Noise Levels during Quiet Daytime Periods at Kerr

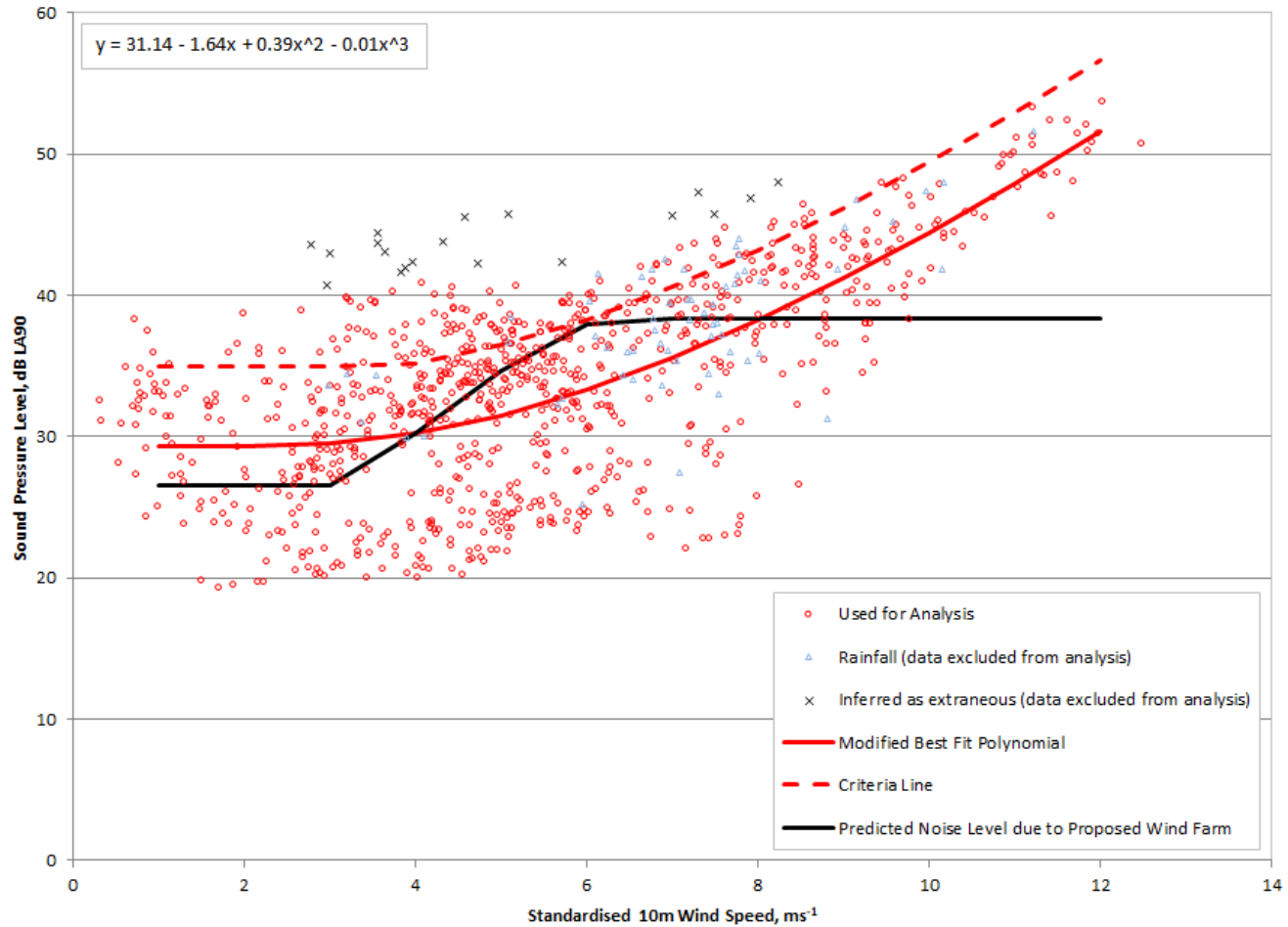


Chart A11.5: Downwind Predicted Noise Levels, Daytime Noise Limits and Background Noise Levels during Quiet Daytime Periods at Upper Caulfield

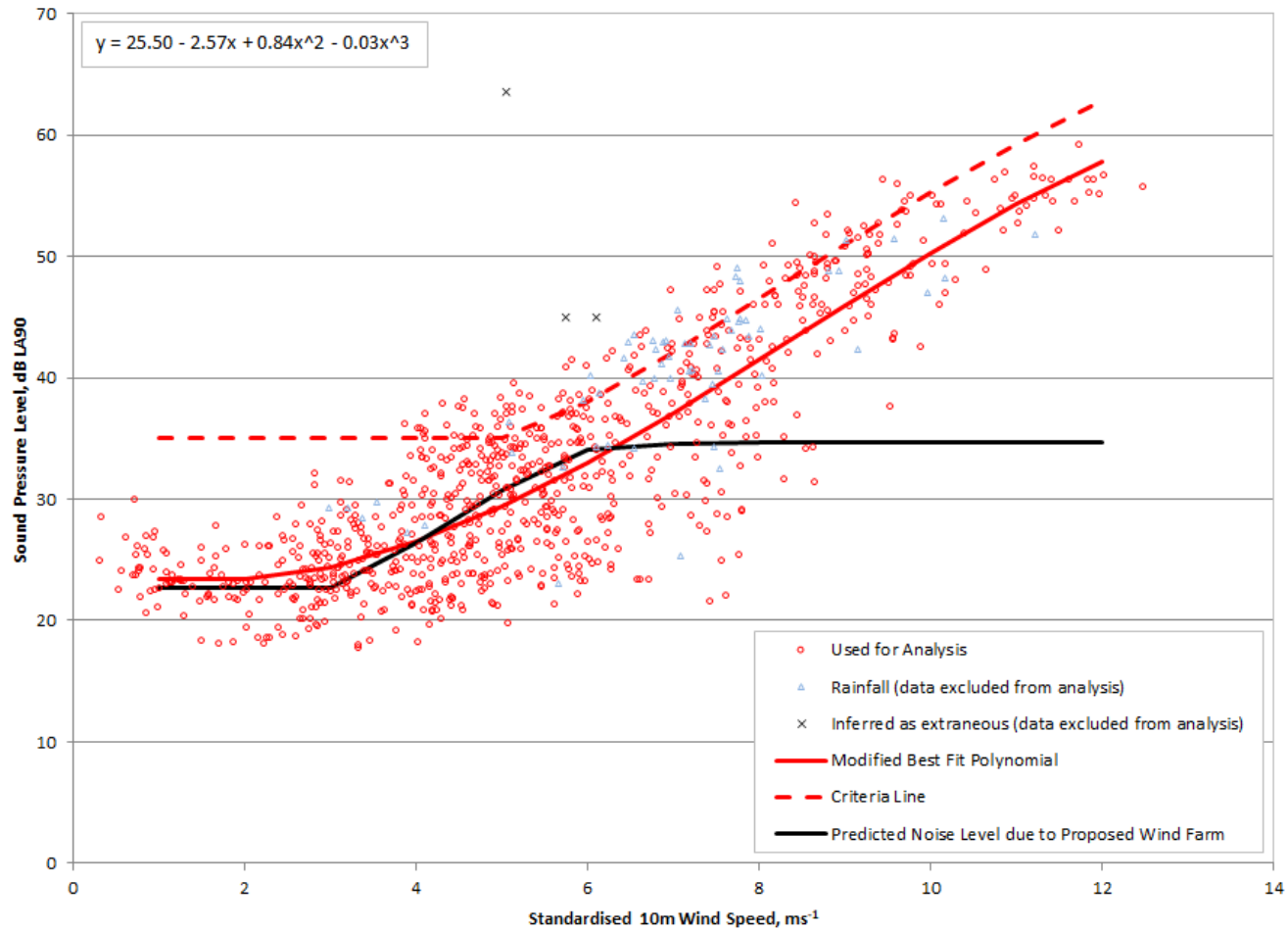


Chart A11.6: Downwind Predicted Noise Levels, Noise Limits and Background Noise Levels during Night-Time Periods at Bloch Farm

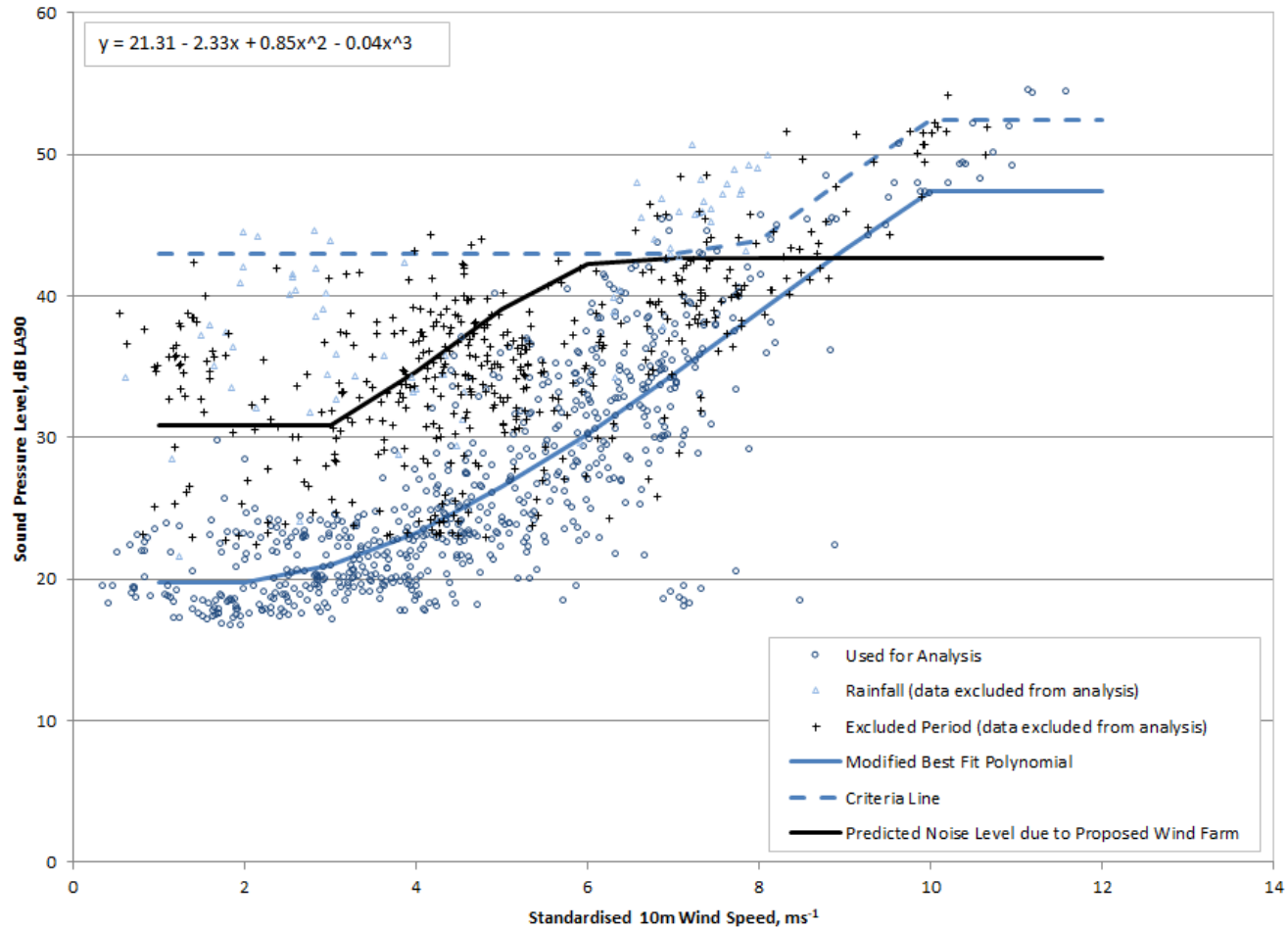


Chart A11.7: Downwind Predicted Noise Levels, Noise Limits and Background Noise Levels during Night-Time Periods at Kerr

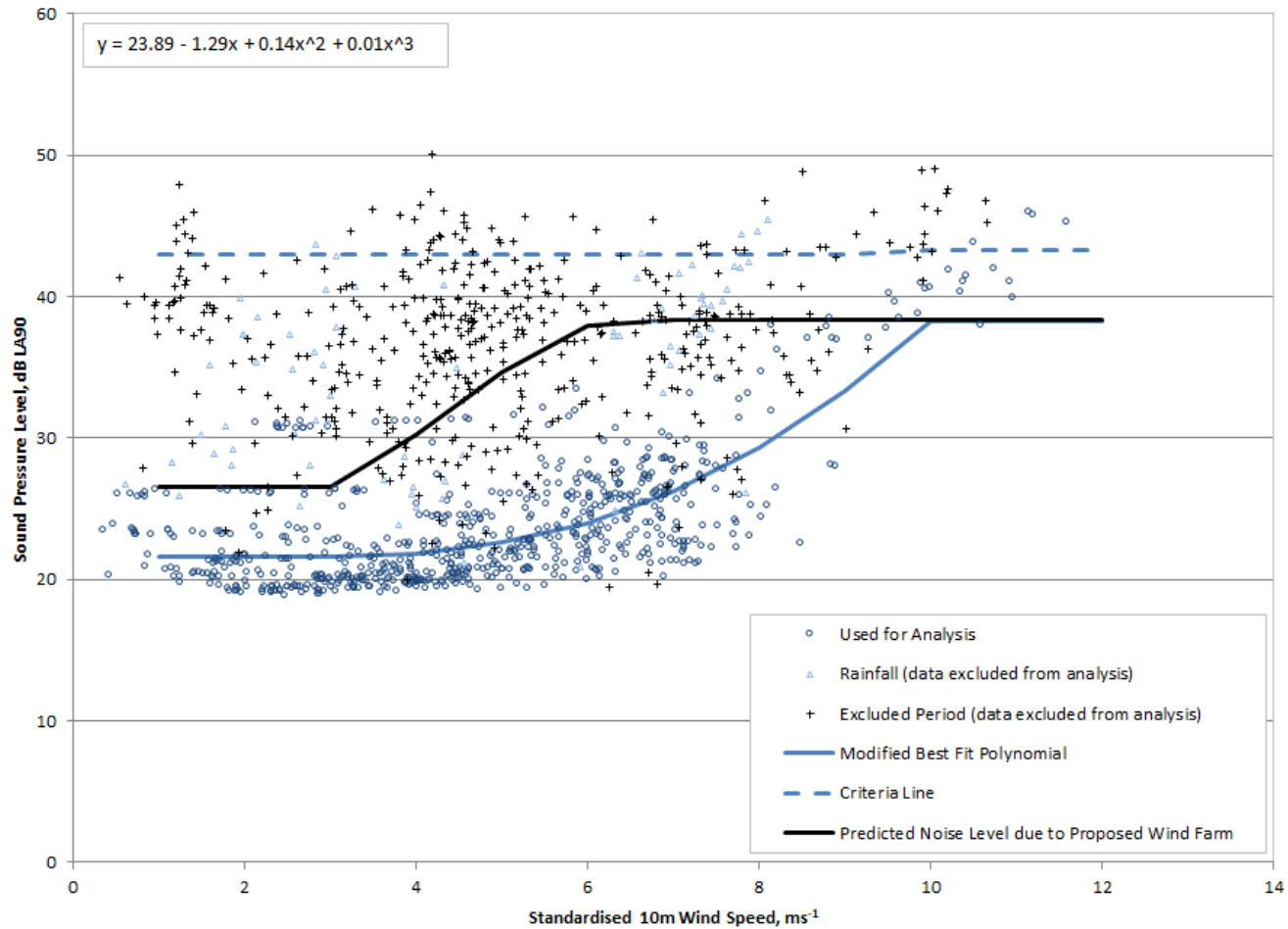


Chart A11.8: Downwind Predicted Noise Levels, Noise Limits and Background Noise Levels during Night-Time Periods at Upper Caulfield

